

# SatSmart Global Land mobile Telematics Solution

## Offering

- Satellite-based telematics solution for service providers & fleet managers
- Full coverage, worldwide
- Web-based customer interface accessible from any Internet browser
- No infrastructure costs, affordable satellite devices and service
- Quick time to market, immediate expansion into other geographies

## Solution Overview

SatSmart offers an end to end telematics solution that leverages LEO satellite technology and the Internet to link telematics service providers (TSP's) and enterprise fleet managers (EFM's) to cars, trucks, containers, etc, almost anywhere in the world.

Based on SatSmart's Telematics Platform and Devices, SatSmart's land mobile solution offers affordable data services over global data networks, enabling GPS tracking, remote monitoring and control and text messaging. SatSmart's solution is easy to deploy, accelerates time to market and enables TSP's & EFM's to immediately expand into other geographical markets.



## Smart Telematics Platform

The Smart Telematics Platform is a java-based software suite that integrates and manages communications and services between mobile devices and back end users and applications.

The platform includes SatSmart's J2EE application, which powers communications and application specific functions, and IBM's WebSphere Application Server and DB2.

The platform is modular, functioning as a stand-alone location-based services platform or as a satellite services gateway for existing LBS platforms.

SatSmart can install the server on the customer premises or provide online hosting services in order to reduce installation/maintenance overheads.

Optional modules include an integrated mapping engine, digital maps and a notification module that forwards alerts and real-time updates to handhelds/PDA's.

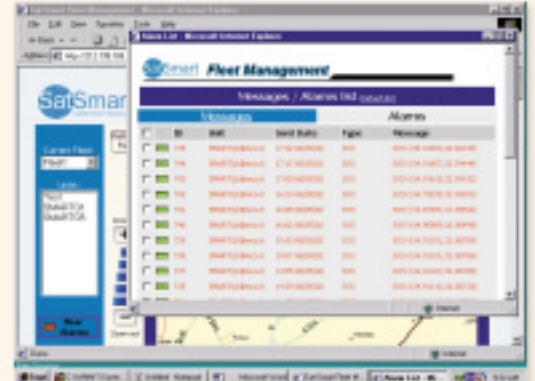
Powered by IBM's WebSphere suite of products, SatSmart's platform can support most wireless networks and devices enabling multi-mode subscriber and field personnel services.

Furthermore, the platform offers provisioning, user authentication and data logging for real-time and non real-time batches.

# SatSmart Global Land mobile Telematics Solution

## Smart Fleet Application

SatSmart offers a web-based fleet management application that enables GPS tracking, remote diagnostics and control and text messaging/dispatching that multiple back end users can access from any Internet browser - wireless/landline.



## Smart Telematics Units

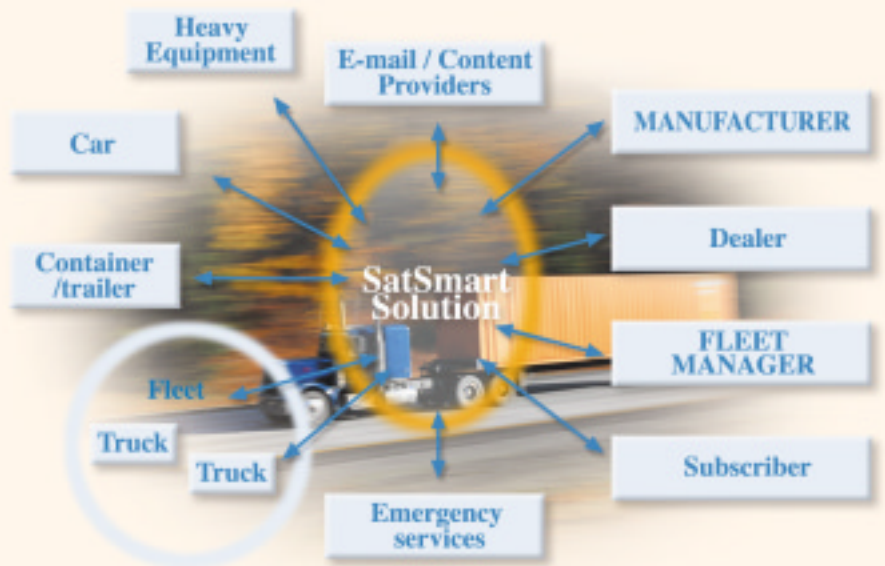
Smart Telematics Units are low-power in-vehicle devices that incorporate a satellite radio for global communications, an integrated GPS receiver for worldwide tracking, customizable application software and vehicle interfaces, enabling the following functionality:



- Connect to vehicle systems, sensors and controls for remote monitoring and control
- Connect to messaging devices for email, dispatching and information services
- Customize software to automatically command/control vehicle, send alerts & store events

## Vehicle Applications

- Trucks and trailers
- Locomotives and rail cars
- Intermodal containers
- Heavy equipment
- Automobiles & recreational vehicles
- Government/military vehicles



## SatSmart Services

- Consulting - Definition, integration, deployment, installation, maintenance and customization; integration with billing system, call center, content providers, etc.
- Hosting - ASP service for reducing installation and maintenance overheads



For more information about SatSmart

Visit: [www.sat-smart.com](http://www.sat-smart.com) • Email: [Info@sat-smart.com](mailto:Info@sat-smart.com) • Tel: +972-4-9592277 • FAX: +972-4-9591118