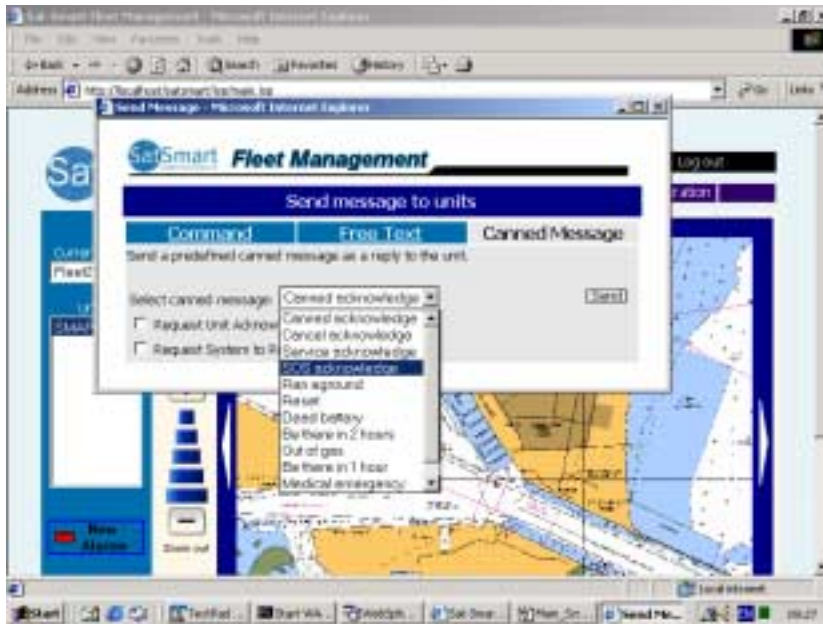


# Smart Telematics Server



## Highlights

- ***Manages and facilitates communications with mobile units, services, information and back office user interaction***
- ***Hosts a web site for multiple customers to interact with mobile units from any computer connected to Internet***
- ***Host on your network or externally***
- ***Programmable to create a host of data messaging services, from simple tracking to sophisticated remote diagnostics***

## Overview

The Smart Telematics Server platform integrates and manages all of the service-related elements of the system including communications with mobile units, the web site and back office user interaction, mapping functions and application logic.

The server runs on IBM's WebSphere Application Server (Advance Edition 4.02) platform, which is rich with applications that customers can leverage for their applications, such as email notification to mobile devices of incoming messages. The server currently utilizes the WAS servlet / JSP container.

## Features

- Includes IBM's DB2 database and HTTP server and MapInfo's MapXtreme Java Edition mapping engine. Supports MapInfo formatted maps.
- Host on customer's network or externally. Hardware should comply with WebSphere's operating requirements.
- Track SatSmart's mobile units' GPS coordinates on digital maps. Poll messages randomly or set tracking intervals.
- Define access permissions for multiple users and organize vehicles into groups and to give users access to view and interact with one or more groups.
- Create and send text messages to units connected to messaging terminals.
- Create canned messages for sending predefined messages and commands for polling information or controlling units, external systems and controls.
- Automatically updates web pages with new messages, events and status changes, while being viewed by users
- Records events and enables operators to print history reports